

Thermal Imagers

Sonel KT-80 i KT-145

Index: WMGBKT80 / WMGBKT145V7 / WMGBKT145V11 / WMGBKT145V30

Sonel KT series is an efficient, budget-friendly and professional infrared camera.

This robust and very handy high-tech system thanks to its intuitively learnable handling and user-friendly single hand operation, which makes in an ideal tool for troubleshooting electrical installations, mechanical components buildings, process equipment HVAC/R equipment and others.

Features and benefits of Sonel KT:

- ż Friendly UI, easy to use without training,
- ż Affordable as entry level diagnostic tool,
- ż Removable large capacity Li-ion battery, 4 hour working time,
- ż 3,5" large screen with no image cropping, high brightness screen to show image with no detailed information lost even outdoor or in highlight,
- ż Rugged and compact design, metal internal structure,
- ż Standard Micro USB interface for data transmission and charging,
- ż Wi-Fi connector (Optional).

Applications:

- ż Electric inspection and diagnosis,
- ż Building inspection and diagnosis,
- ż Mechanical equipment maintenance,
- ż Manufacturing process service,
- ż Petrochemical Industry maintenance.



Sonel KT-145



Thermal Imagers

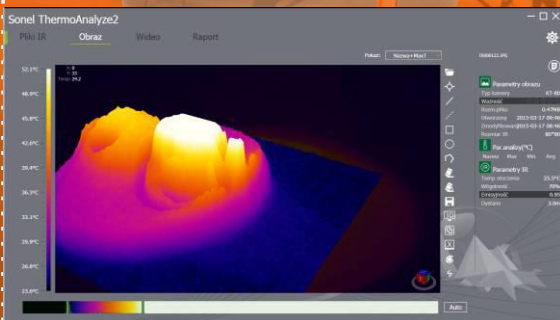
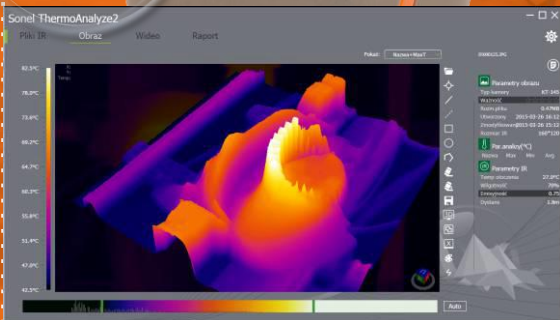
Sonel KT-80 i KT-145

Index: WMGBKT80 / WMGBKT145V7 / WMGBKT145V11 / WMGBKT145V30



SPECIFICATIONS				
Model	KT-145v7	KT-145v11	KT-145v30	KT-80
Index	WMGBKT145V7	WMGBKT145V11	WMGBKT145V30	WMGBKT80
Lens	7 mm	11 mm	30 mm	8 mm
Thermal specifications				
Detector type	≤ 160 x 120			≤ 80 x 80
Spectral range	8-14 μm			
Focus	Manual			
USB type	Micro USB Cable			
Thermal sensitivity	≤ 0.08°C @30 °C			
Digital zoom	x2			-
Palette	6			4
Interface	micro USB			
Display specifications				
Display	Hi-brightness LCD			
	3.5" LCD (resolution 320 x 240 px)			
	Triple brightness adjustable			
Frame	50 Hz			
Temperature measurement parameters				
Accuracy	±2°C or ±2%			
Temp. range	-20°C...+350 °C			0°C...+250 °C
Measurement parameter calibration	Emissivity adjustable (0.01-1.00)			
	Ambient temperature			
	Distance			
	Humidity			
Measurement functions				
Point	Center point temperature			
Max	Area auto tracking			
Min	Area auto tracking			
Alarm	Area max. temperature			-
	Area min. temperature			-
Format file / storage	JPG / removable SD memory card			
Power system				
Battery type	3,7 V 4200 mAh Li-Ion			
Charging system	In camera charging or external battery charger (option)			
Power adapter	110/230 VAC, 50/60 Hz			
Battery operating time	up to 4 hours			
Other technical data				
Enclosure protection	IP43			
Dimensions	103 mm x 98 mm x 258 mm			
Weight	755 g			
Operating temperature	-10°C...50°C			
Storage temperature	-20°C...60°C			
Humidity	10% to 95 without condensation			
Shock	25G, IEC 68-2-29			
Vibration	2G, IEC 68-2-6			

THERMOANALYZE 2



STANDARD ACCESSORIES OF SONEL KT-80:

- Sonel KT-80 thermal imager
- memory SD card,
- power adapter 100~240V (with adapters for different sockets),
- USB-micro USB cable,
- DVD with Sonel ThermoAnalyze 2 software,
- instruction manual,
- instruction manual for Sonel ThermoAnalyze 2.
- hand strip.

STANDARD ACCESSORIES OF SONEL KT-145:

- Sonel KT-145 thermal imager
- memory SD card,
- power adapter 100~240V (with adapters for different sockets)
- USB-micro USB cable,
- DVD with Sonel ThermoAnalyze 2 software,
- instruction manual,
- instruction manual for Sonel ThermoAnalyze 2.
- hand strip.
- carrying case M7 (WAFUTM7).